

TELELOCK®

TS-90 SERIES SPEAKER STANDS

Setting the standard as the top-of-the-line speaker stand on the market.

SAFEST STAND

Safely raise and lower heavy speakers with the pneumatic-like TeleLock adjustment collar.

MOST STABLE BASE

Larger tubing securely supports 150 lb. portable speakers.

TRUE PORTABILITY

Quickly folds into a compact, lightweight unit.

MOST DURABLE

Finest materials with proven reliability.

GUARANTEED FOR LIFE

TS-90B/TS-90S

- TS-90B #13908— Black, TS-90S #13907— Silver
- height 3'8" - 6'7" (1118 mm - 2007 mm)
- weight 6.2 lbs. (2.8 kg)
- base diameter 47" (1194 mm)
- load capacity of 150 lbs. (68.2 kg)
- folded 43-1/2" x 5-1/2" (1105 mm x 140 mm)
- guaranteed for life

TS-99B/TS-99S

TALL SPEAKER STANDS

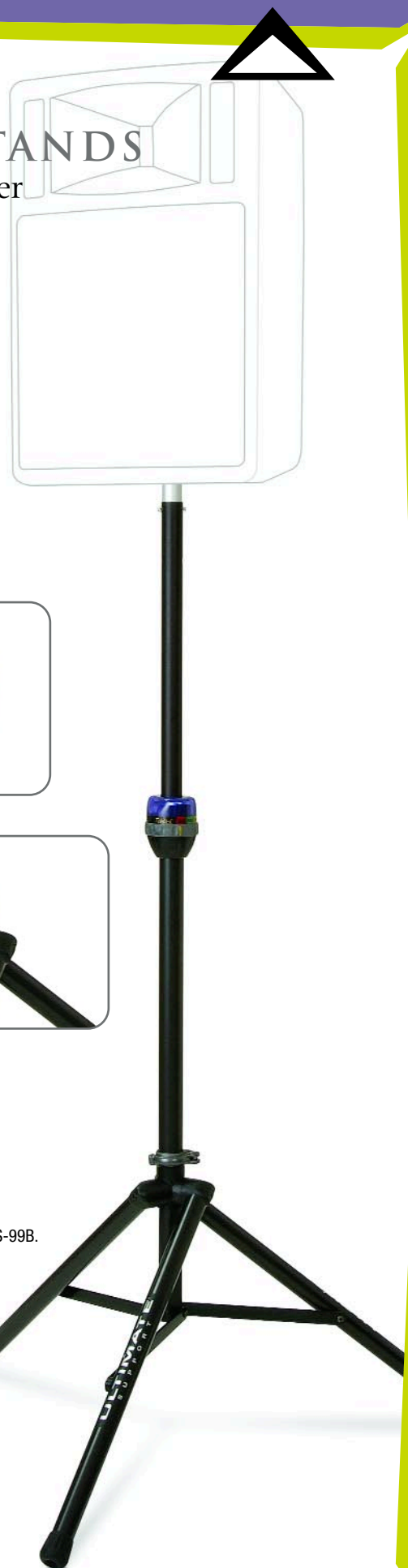
- TS-99B #13910— Black, TS-99S #13909— Silver
- height 5'2" - 9'2" (1575 mm - 2794 mm)
- weight 8 lbs. (3.6 kg)
- base diameter 62" (1575 mm)
- load capacity of 150 lbs. (68.2 kg)
- folded 57.5" x 5.5" (1461 mm x 140 mm)
- guaranteed for life

TS-99BL

TALL LEVELING-LEG SPEAKER STAND

Leg adjusts in length to level the stand on uneven surfaces. Except where noted, specs are the same as TS-99B.

- TS-99BL #13642— Black leveling leg
- weight 9 lbs. (4.1 kg) • folded 57.5" x 6" (1461 mm x 152 mm)



ULTIMATE
SUPPORT™

ELEVATING PERFORMANCES

Ultimate Support Systems, Inc.
2506 Zurich Drive | Ft. Collins, CO 80524
Phone: 800-525-5628 | www.ultimatesupport.com

ACCESSORIES FOR SPEAKER STANDS

The following accessories are for all TS-90 Speaker Stands.



TOTE BAGS

Heavy-duty, padded, zippered Tote Bags.

BAG-90 #15691

holds one TS-90, TS-80, or TS-70 Speaker Stand
10-1/2" x 49-1/2" (267 mm x 1257 mm)

BAG-90D #15693

holds two TS-90, TS-80, or TS-70 Speaker Stands
14-1/2" x 49-1/2" (368 mm x 1257 mm)

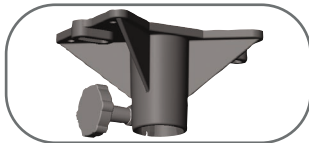
BAG-99 #15692

holds one TS-99 or TS-88 Speaker Stand
10-1/2" x 60-1/2" (267 mm x 1537 mm)

BAG-99D #15694

holds two TS-99 or TS-88 Speaker Stands
14-1/2" x 60-1/2" (368 mm x 1537 mm)

- 1-year warranty on all bags.



BMB-200K LARGE MOUNTING BRACKET

#10766

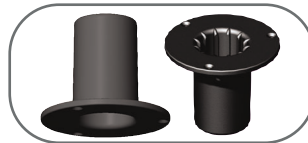
External bracket securely mounts any speaker cabinet with a flat bottom on a (1-1/2") (38 mm) speaker stand tube.

Measures 4" x 6" (102 mm x 152 mm).

All hardware included for installation.

BMB-200K glass-reinforced polycarbonate fitting holds 100 lbs. (45.5 kg).

- 3-year warranty



TSM SERIES SOCKET MOUNTING BRACKETS

TSM-150MK #13421 - 1-1/2" / 38 mm tube

TSM-138MK #13425 - 1-3/8" / 35 mm tube

Internal metal bracket securely mounts any speaker cabinet with a flat bottom on a (1-1/2") (38 mm) speaker stand tube.

Diameter is 4" (102 mm).

Metal fitting holds 150 lbs. (68.2 kg).

- 3-year warranty