

## SPECIAL INSTRUCTIONS

---

- For safety's sake, be sure to adjust V-Stand® Pro height **ONLY** when keyboard is not on stand.
- Make sure height settings match on both inner struts before placing keyboard on V-Stand® Pro!
- Use pins to lock stand arms and legs in place. This makes it easy to move the stand around.
- The V-Stand Pro has a second tier available for purchase.

**ULTIMATE**  
SUPPORT®

**V-STAND**  
SERIES

KEYBOARD  
STAND

Manual



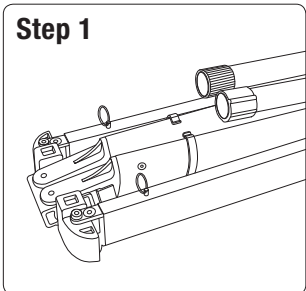
Visit **ultimatesupport.com**

to download a detailed  
product manual, read full  
warranty details and to  
register for warranty.



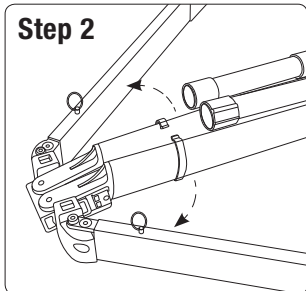
## SETUP

### Step 1



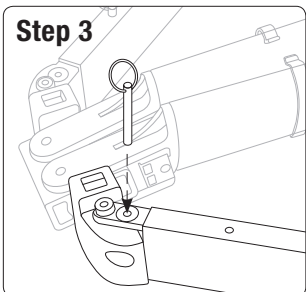
Lay stand on floor in folded position.

### Step 2



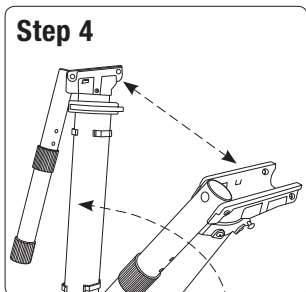
Separate both legs outward until they stop.

### Step 3



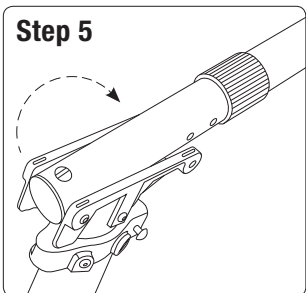
Secure both legs in an open position with locking pins.

### Step 4



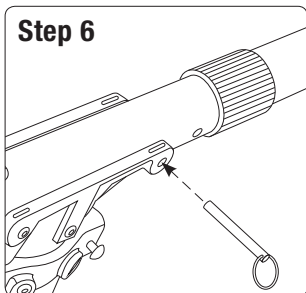
Pull vertical struts upward to a vertical position and spread them to their open position.

### Step 5



Move support arms into their horizontal position by swinging them up and over the vertical struts.

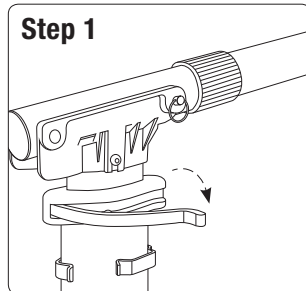
### Step 6



Secure both arms in a horizontal position with locking pins.

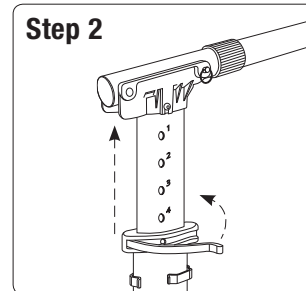
## HEIGHT ADJUSTMENT

### Step 1



Pull, or rotate, locking pin collar to release inner strut.

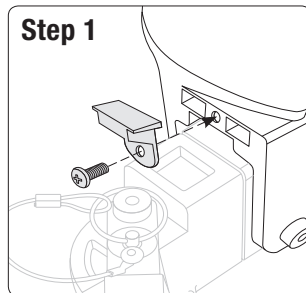
### Step 2



Raise or lower inner strut to desired height and push, or rotate, locking pin collar into locking position.

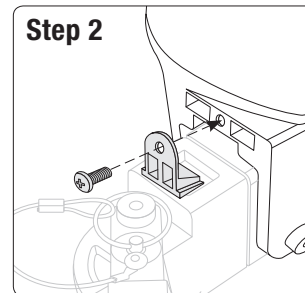
## REDUCING THE WIDTH OF THE COLUMN STRUTS

### Step 1



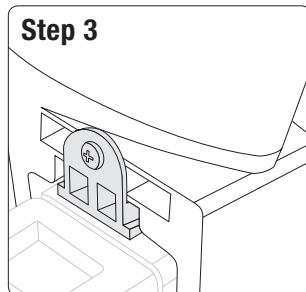
Loosen and remove the screw and angle adapter from vertical struts.

### Step 2



Flip and turn the angle adapter. Screw angle adapter back into the vertical struts.

### Step 3



Repeat steps 1 and 2 to the other side.