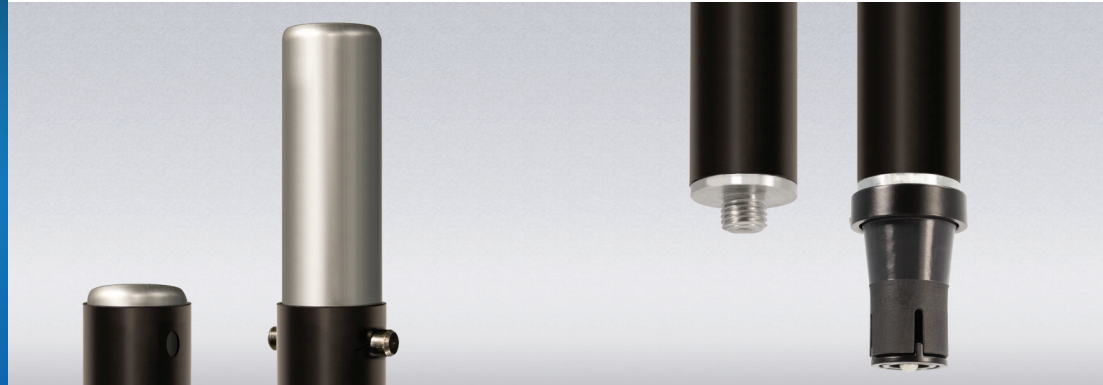


Air-Powered Series Speaker Pole SP-100

The new SP-100 speaker poles feature an expanding cylinder system that will firmly fit multiple speaker sockets from 1-3/8" to 1-1/2" diameter. Using a 2mm hex wrench, the adapter can also be removed to provide standard M20 threading, allowing your SP-100 speaker pole to be a truly universal solution.

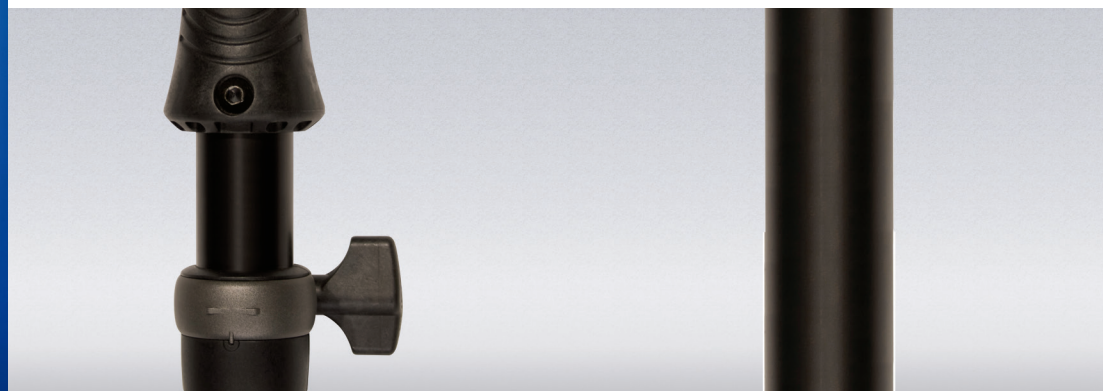


Adjustable Speaker Adapter

The top of the speaker pole has an adapter that fits both a 1.5" & 1.375" speaker mount.

Universal Subwoofer Adapter

The bottom of the speaker pole has a universal fit adapter & threaded connector



Air-Powered Lift Assist

An air-powered shock helps lift your speaker. The shock can lift 35 lbs. with very little additional assistance required. A die-cast fitting holds the speaker in place and a grip is added to help pull speaker down.

Over-Size Tubing

Our speaker poles are made with over-sized tubing for greater strength and dependability.

SP-100 Specs

- Part Number: 17654
- Height Range: 37.9" - 59.8" (964mm - 1520mm)
- Upper Tube Size: 1.5" (38.10mm)
- Lower Tube Size: 1.75" (44.45mm)
- Weight Rating: 75 lbs. (34.02 kg)
- Weight: 5.7lbs. (2.58kg)